

James McFarlens Land

Volcant Land

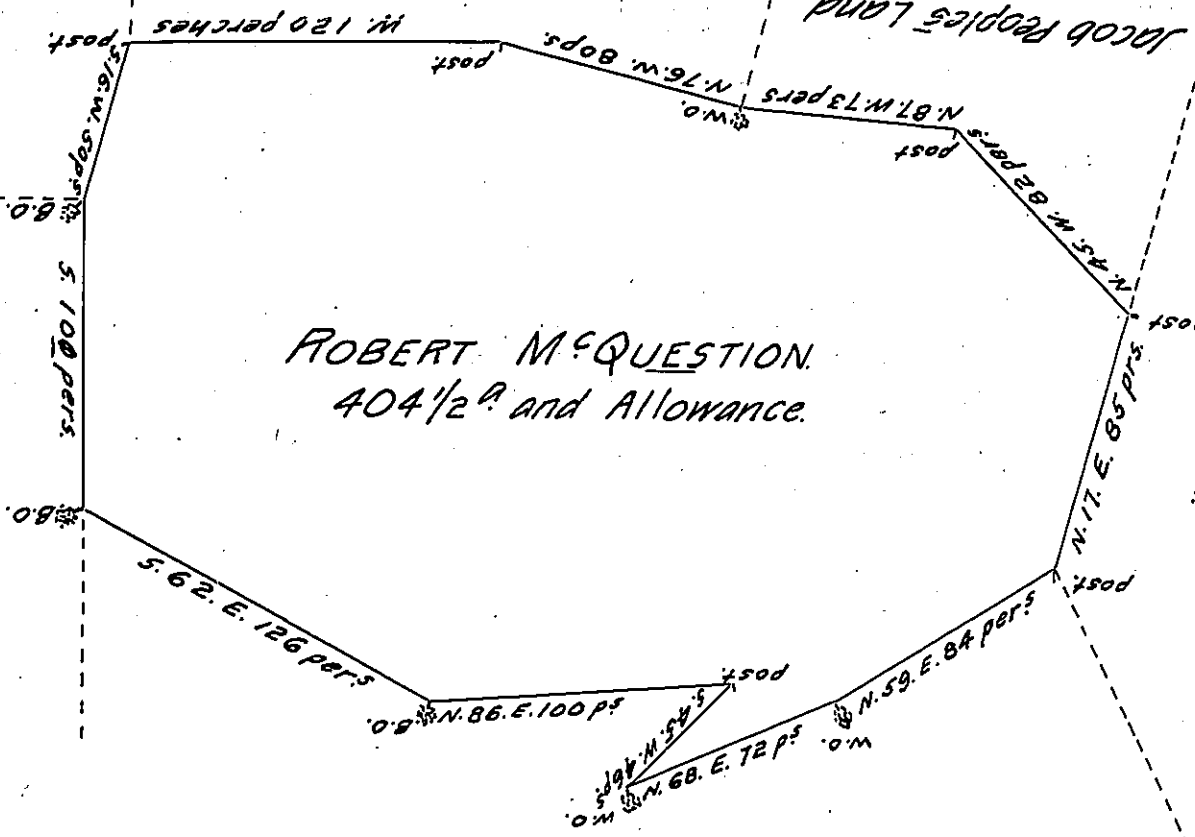
Jacob Peoples Land

Volcant Land

Volcant Land

ROBERT McQUESTION.  
404 1/2<sup>ac</sup> and Allowance.

James McQUESTIONS Land



A Draught of a tract of Land Situate in West Pennsborough Township, Cumberland County, Containing Four Hundred and four and one half Acres with the Usual Allowance of Six  $\frac{1}{2}$  Ct for Roads. Survey'd for Robert McQuestion July the 3<sup>d</sup> 1752, by Virtue of a Warrant Bearing Date the 19<sup>th</sup> of February 1752.

Jo<sup>n</sup> Armstrong,

D. S.

To Nicholas Scull,  
Surveyor Genl.

IN TESTIMONY that the above is a copy of the original remaining on file in the Department of Internal Affairs of Pennsylvania, made conformably to an Act of Assembly approved the 16th day of February, 1833, I have hereunto set my Hand and caused the Seal of said Department to be affixed at Harrisburg, this twenty-sixth day of January 1906.

*Grace S. Brown*  
Secretary of Internal Affairs.